



# Bio-Plex® Data Acquisition Module

## OVERVIEW

### Abstract

The PLA 3.0 Data Acquisition Module for Bio-Plex (Bio-Rad Laboratories, Inc) enables users to import XML-files created with Bio-Plex Manager 4.1 into PLA 3.0 for further analysis.

### Features

- Fast, secure and reliable data transfer to PLA.
- All imported data is fully retraceable (audit trail).
- Option to create multiple assays from a single source file.

More information on PLA 3.0 Data Acquisition Modules:

## TECHNICAL SPECIFICATION

### Type

Data Acquisition Module

### System Requirements

- PLA 3.0.4
- Bioassay Package 23 or higher

### Supported File Formats

- .xml

### Version

1.2.0 (Build 40)

### Supported Systems

- Bio-Plex 100 and 200 systems
- Bio-Plex instruments

### Supported Languages

English, German

## DELIVERY AND SUPPORT

### Release Date

2018/03/09

### Scope of Delivery

- Software (download)
- User manual (PDF)

### Support and Upgrades

### Product No.

24037

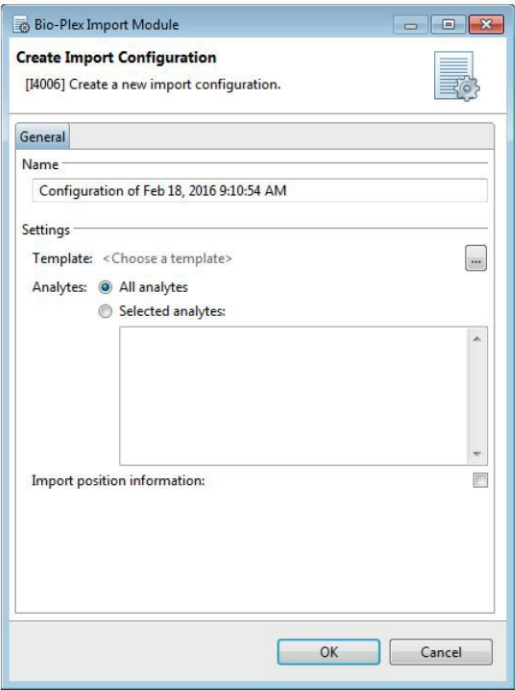
### Lifecycle

We will provide support for PLA 3.0 and all related modules until March 15, 2024.

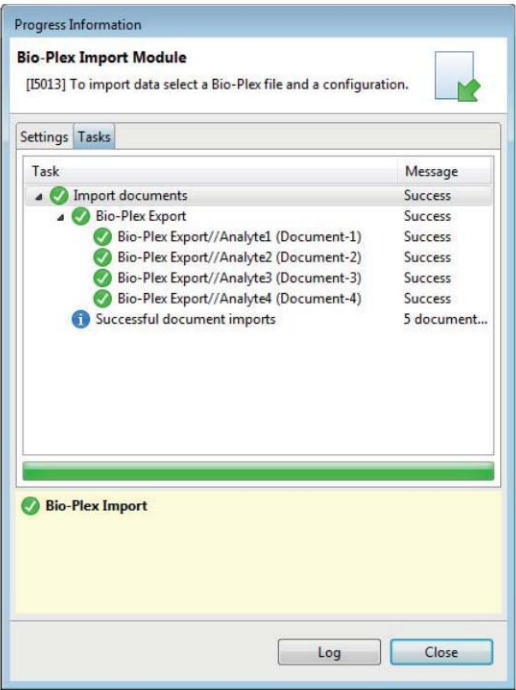
This module is covered by our PLA Support Contract. The first year is included and the contract can be renewed year by year. To find out more about its benefits, please go to:

SCREENSHOTS

Creating a data acquisition configuration.



Ending the acquisition process successfully.



Viewing the results of the data acquisition process.

